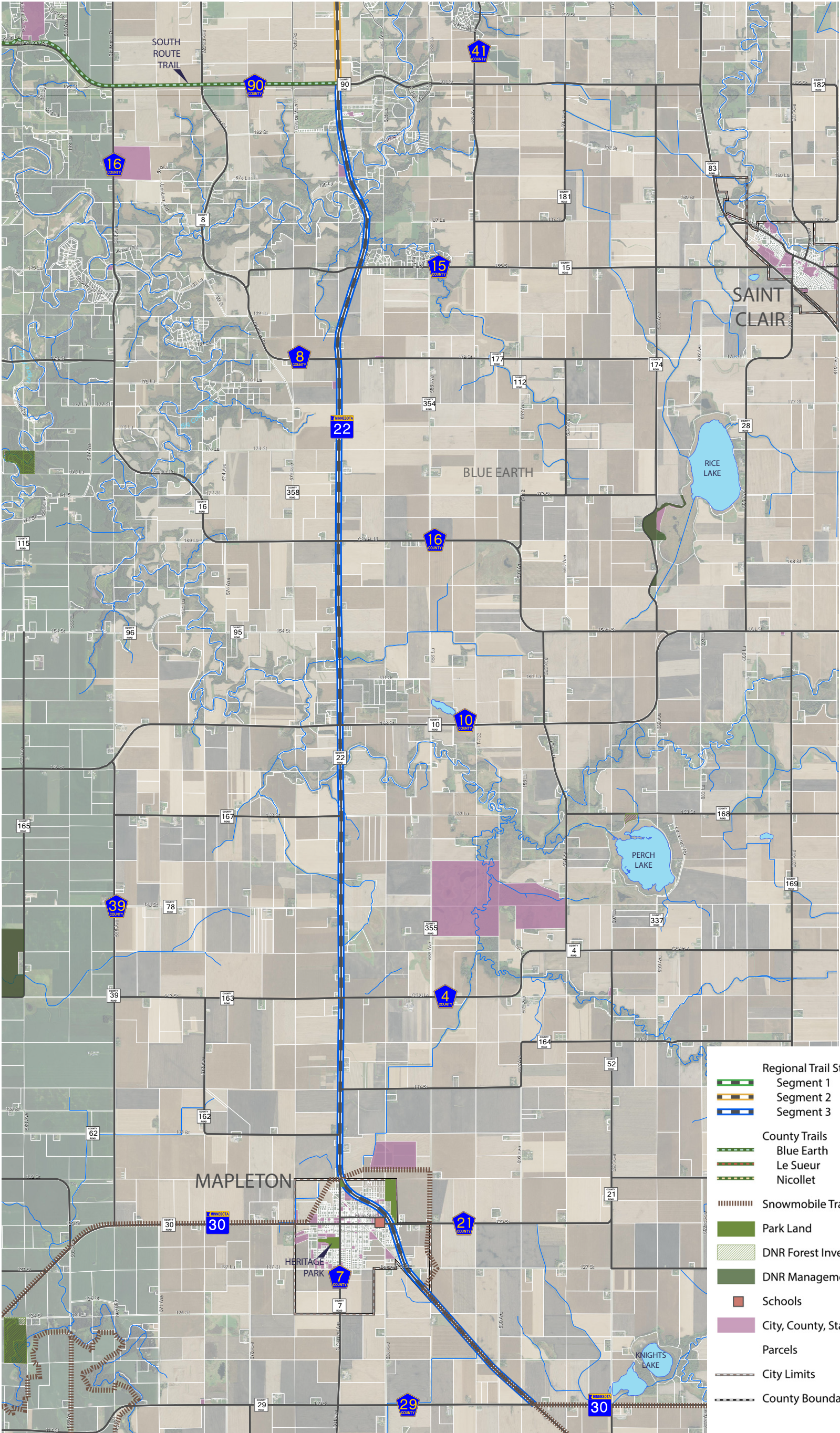


**SEGMENT 2 EXISTING CONDITIONS - for analysis purposes only**





**SEGMENT 3 EXISTING CONDITIONS** - for analysis purposes only



Segment	Along   Through	Length (miles) <sup>1</sup>	Right-of-Way <sup>2</sup>	County	ROW Width (Feet) (Estimated) <sup>3</sup>	Number of Adjacent Parcels <sup>4</sup>	Wetland Conflicts (acres)	Driveway Crossing <sup>5</sup>	Railroad Crossing	Road Crossing	Public Destinations	Miles of Utility Lines <sup>6</sup>
Segment A1 W	Cty Rd 5 (MN River Valley Trail to Deerhaven Dr)	3	Private	Blue Earth County	0	22	1.79	0	0	5	Sakatah State Trail	0.6
Segment A1 E	E MN River Valley Trail to Deerhaven Dr	1.86	Blue Earth County	Blue Earth County	50-150	46	0.00	20	0	8	Sakatah State Trail	1.8
Segment A2	Cty Rd 5 to ___ (Deerhaven Dr to County Line)	2.32	Blue Earth County & Private	Blue Earth County	0	26	3.42	10	0	3	N/A	1.0
Segment A3	County Line to Kasota Prairie SNA	2.15	Private	Le Sueur County	0	21	0.00	0	0	3	Minnesota River, Kasota Prairie SNA	0.5
Segment A4	Kasota Prairie SNA to W Watkins St	4	Private	Le Sueur County	0	46	0.00	17	1	7	Kasota Prairie SNA, Downtown Kasota	1.6
Segment B1	Lime Valley Rd to Cty Rd 5 (Sakatah Trailhead on Lime Valley Dr. to County Line	2.91	Lime Township	Blue Earth County	65-100	56	0.21	9	0	6	N/A	0.9
Segment B2	Jayhawk Rd	1.01	Lime Township	Blue Earth County	65	12	0.00	0	0	2	N/A	1.0
Segment B3	County Rd 21 (County Line to Cty Rd 102)	3.99	Le Sueur County	Le Sueur County	125-300*	69	0.10	18	0	11	Downtown Kasota	2.4
Segment B4	Cty Rd 360 (Cty 21 west to Cty 140)	1.48	Le Sueur County	Le Sueur County	135-150*	29	0.40	11	1	1	N/A	1.4
Segment B5	Cty Rd 140 (Cty 21 west to Kasota Prairie Conservation Area)	1	Le Sueur County & Private	Le Sueur County	100*	11	0.00	2	1	1	Kasota Prairie Conservation Area	0.1
Segment C1	TH22 (Sakatah Trailhead to County Line)	3.96	MNDOT	Blue Earth County	165-375	57	0.24	10	0	6	Sakatah State Trail	1.5
Segment C2	TH22 (County Line to Cty Rd 102)	2	MNDOT	Le Sueur County	190 - 300*	32	0.74	8	0	4	N/A	3.1
Segment C3	TH22 (County Rd 102 to Saint Peter trail)	1.46	MNDOT	Le Sueur & Nicollet County	300-375*	55	0.00	4	0	3	Riverside Park	1.7
Subtotal: Segment A West		11.5	Private	Blue Earth & Le Sueur County	0-150	115	2	27	1	18	Sakatah State Trail, MN River, Kasota Prairie SNA, Downtown Kasota	3.7
Subtotal: Segment A East		10.3	Blue Earth County & Private	Blue Earth & Le Sueur County	0	139	3	47	1	21	Sakatah State Trail, MN River, Kasota Prairie SNA, Downtown Kasota	4.9
Subtotal: Segment B		10.4	Lime Township, Le Sueur County & Private	Blue Earth & Le Sueur County	65-300*	177	1	40	2	21	Downtown Kasota & Kasota Prairie Conservation Area	5.9
Subtotal: Segment C		7.4	MNDOT	Blue Earth, Le Sueur & Nicollet County	165-375*	144	1	22	0	13	Sakatah State Trail & Riverside Park	6.3
Segment	Along   Through	Length (miles) <sup>1</sup>	Right-of-Way <sup>2</sup>	County	ROW Width (Feet) (Estimated) <sup>3</sup>	Number of Adjacent Parcels <sup>4</sup>	Linear Feet of Lakeshore/ Wetland Conflicts	Driveway Crossing <sup>5</sup>	Railroad Crossing	Road Crossing	Public Destinations	Miles of Utility Lines <sup>6</sup>

**Notes**

1. Length measured in miles.

2. ROW jurisdiction for trail corridor.

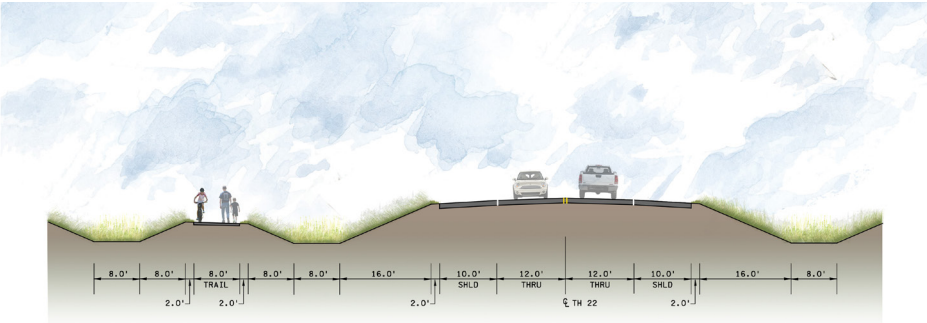
3. ROW widths based on available parcel data and 2015 air photo analysis.

\* Available ROW data is inconclusive. Verify through alternative data.

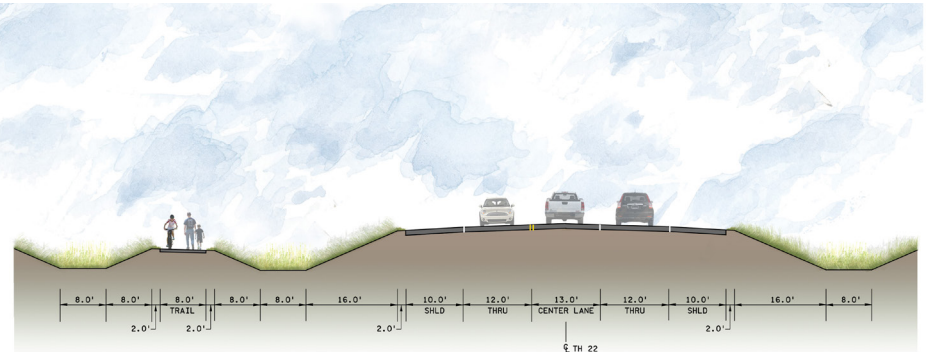
4. Parcel numbers are representative of the potential number of adjacent properties.

5. Driveway crossings based on aerial image analysis. Does not include farm field entrances. Only counting driveways on the west/south side of road.

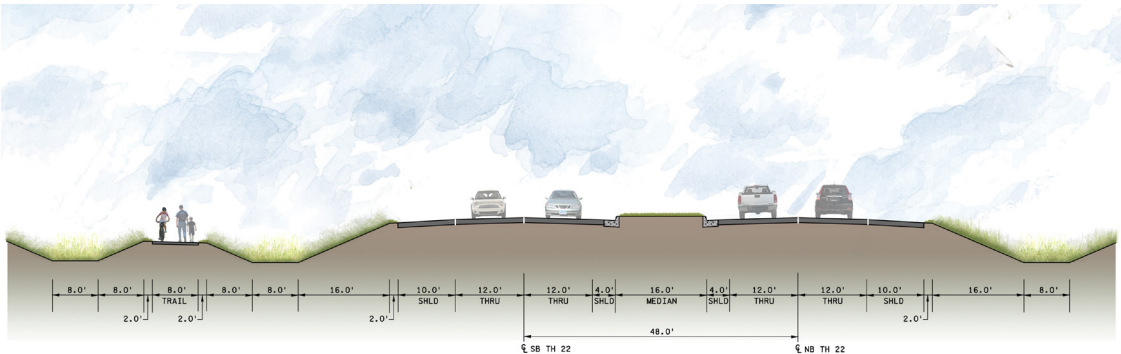
6. Above-ground utility lines based on aerial image analysis and field observation.



2-Lane and Trail

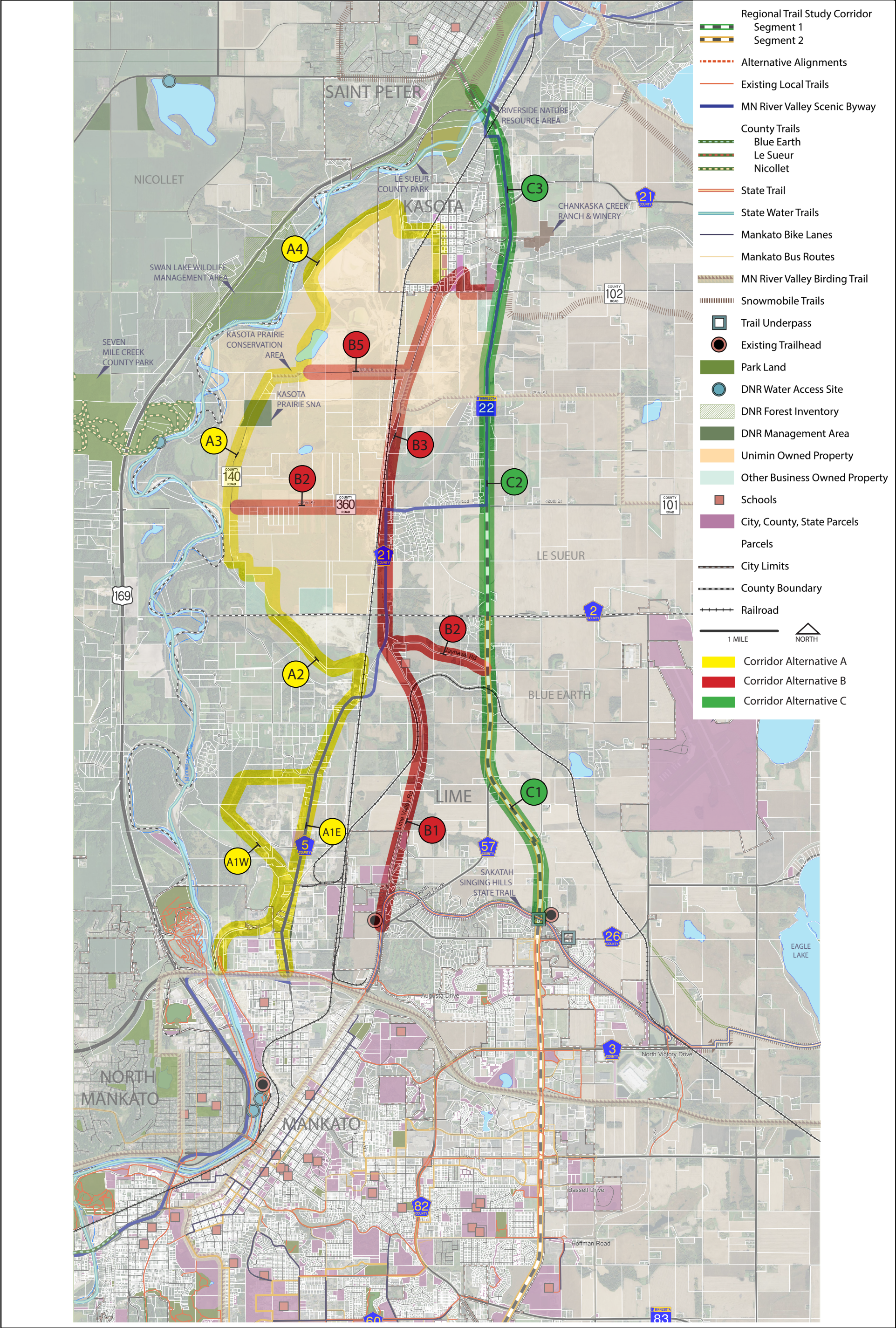


3-Lane and Trail

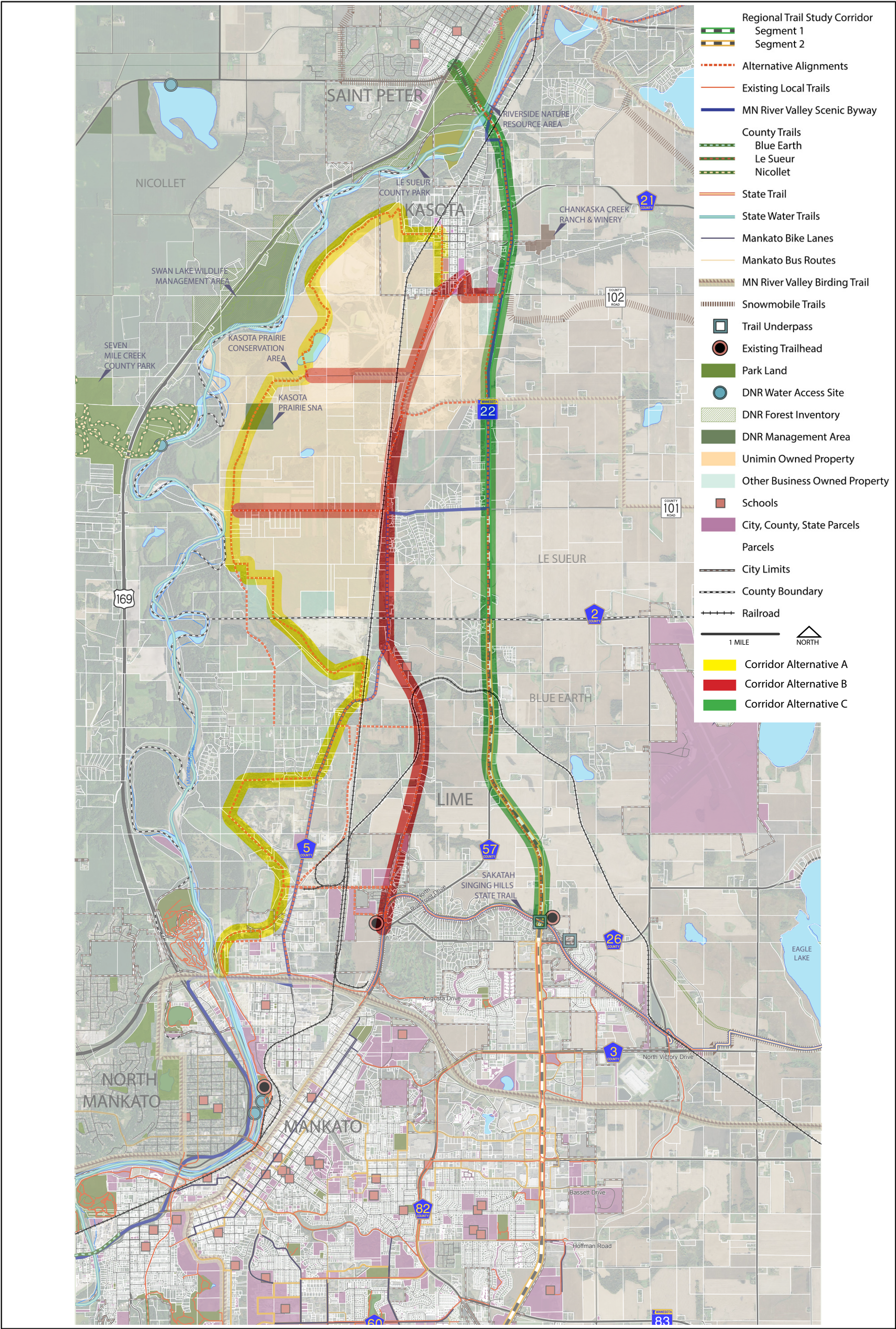


4-Lane and Trail











# Pedestrian Crossing Options

City of Mankato

## How do you prefer pedestrians to cross Highway 22?

### AT INTERSECTIONS



Signal



Roundabout

### AT MID-BLOCK CROSSINGS



Overpass

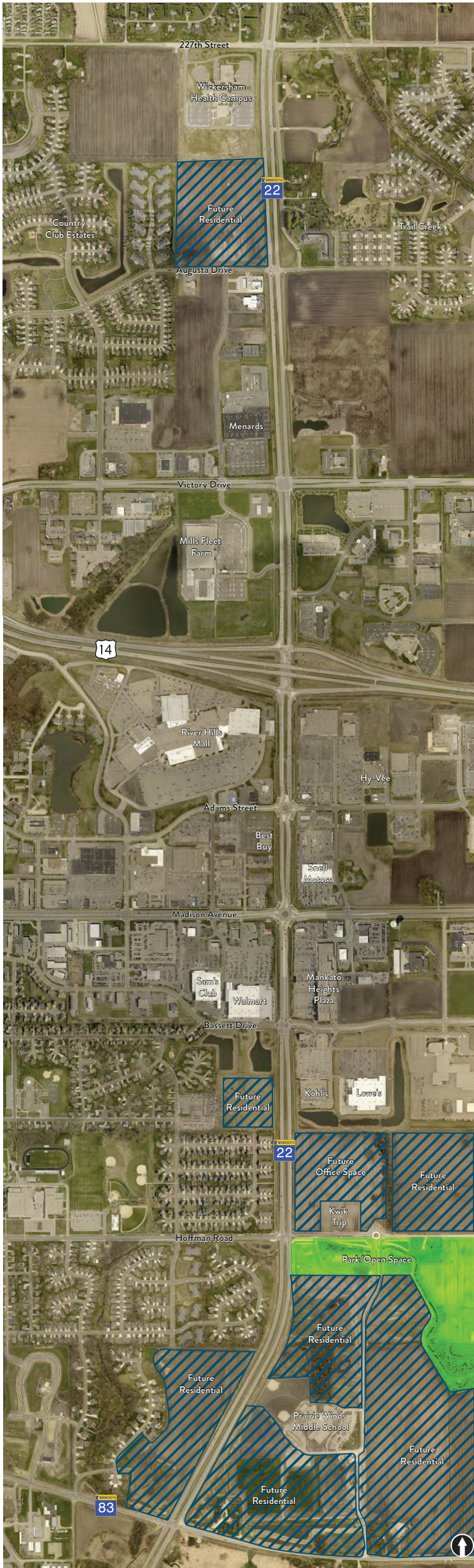


Underpass



Pedestrian Signal – Hawk System

Place a sticker on your preferred pedestrian crossing location (overpass/underpass)





①



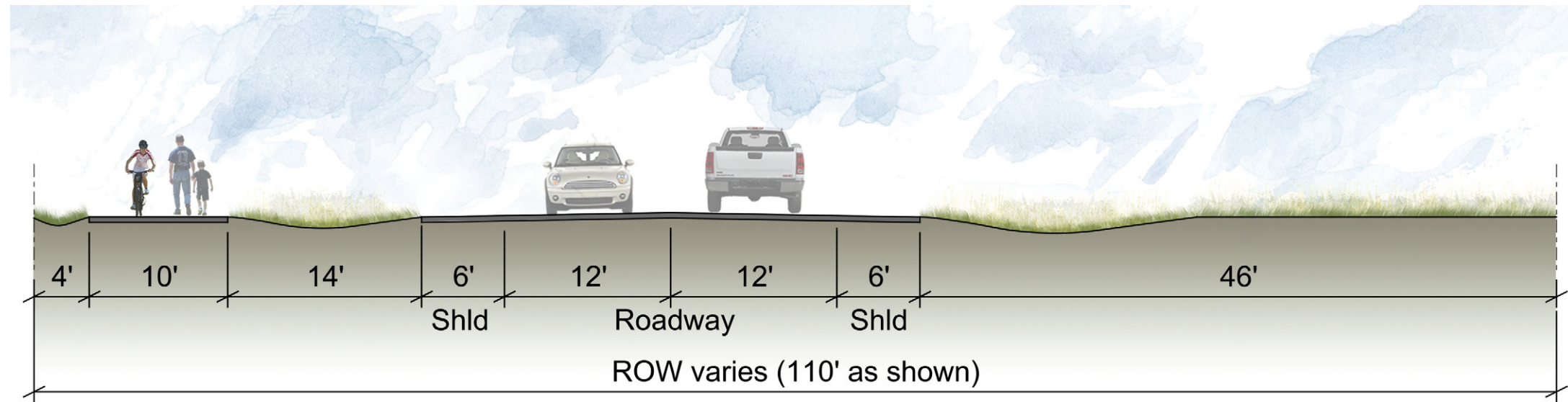
②



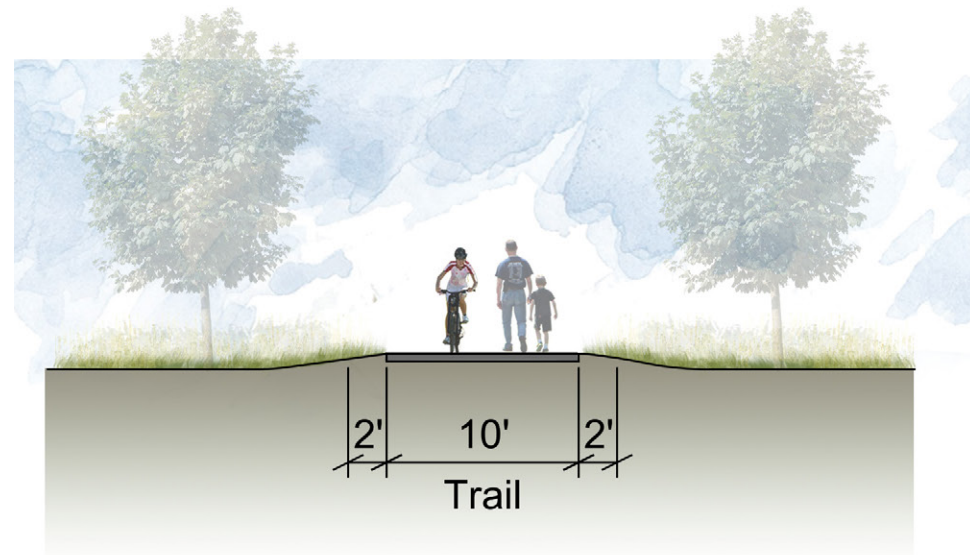




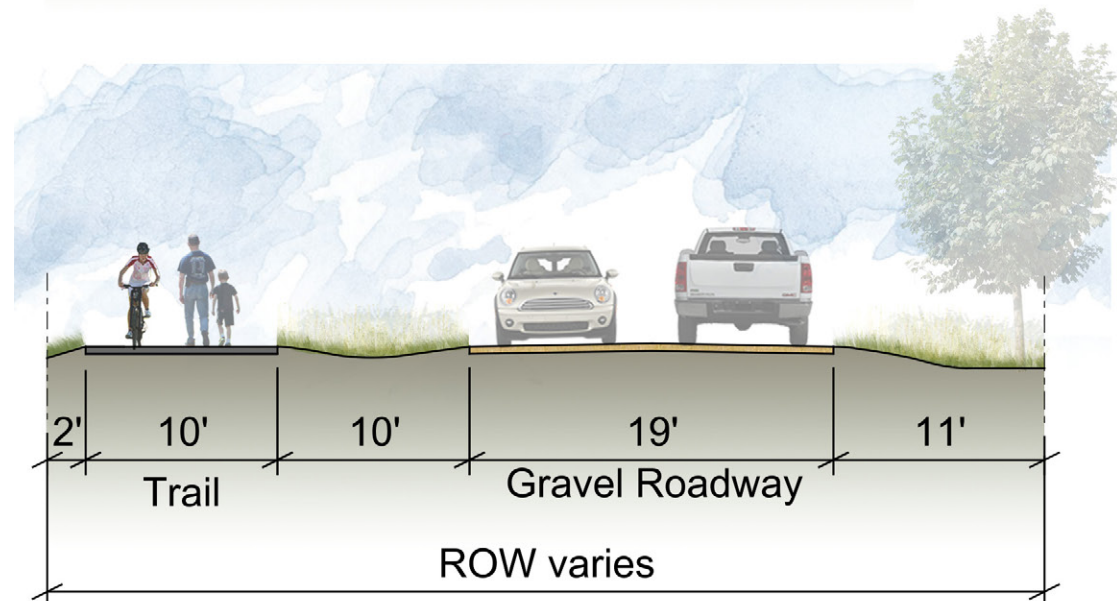
**A1**



**A2 & A4**



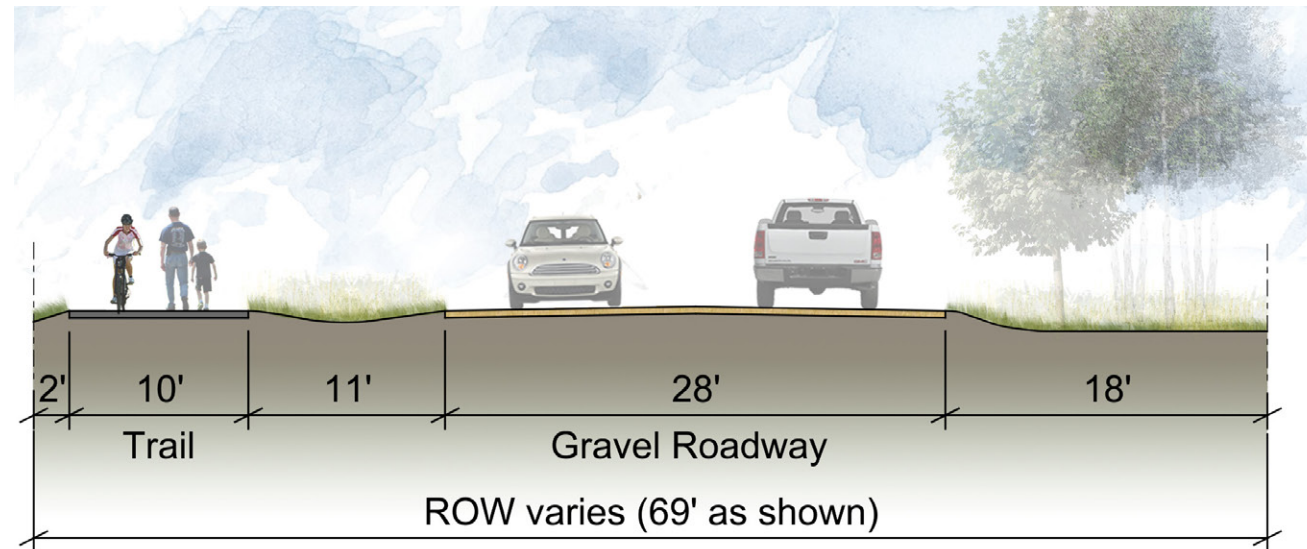
**A3**



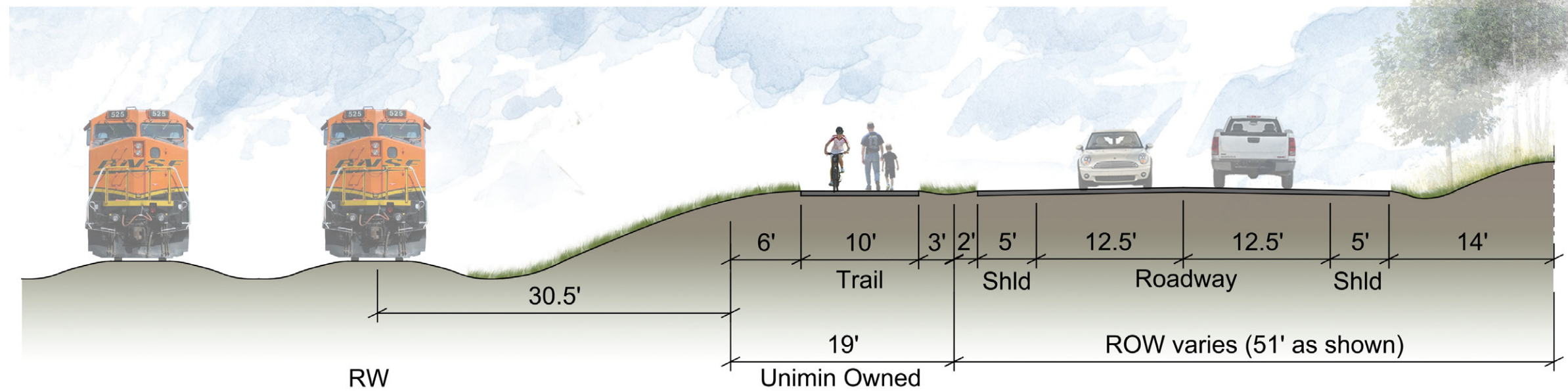




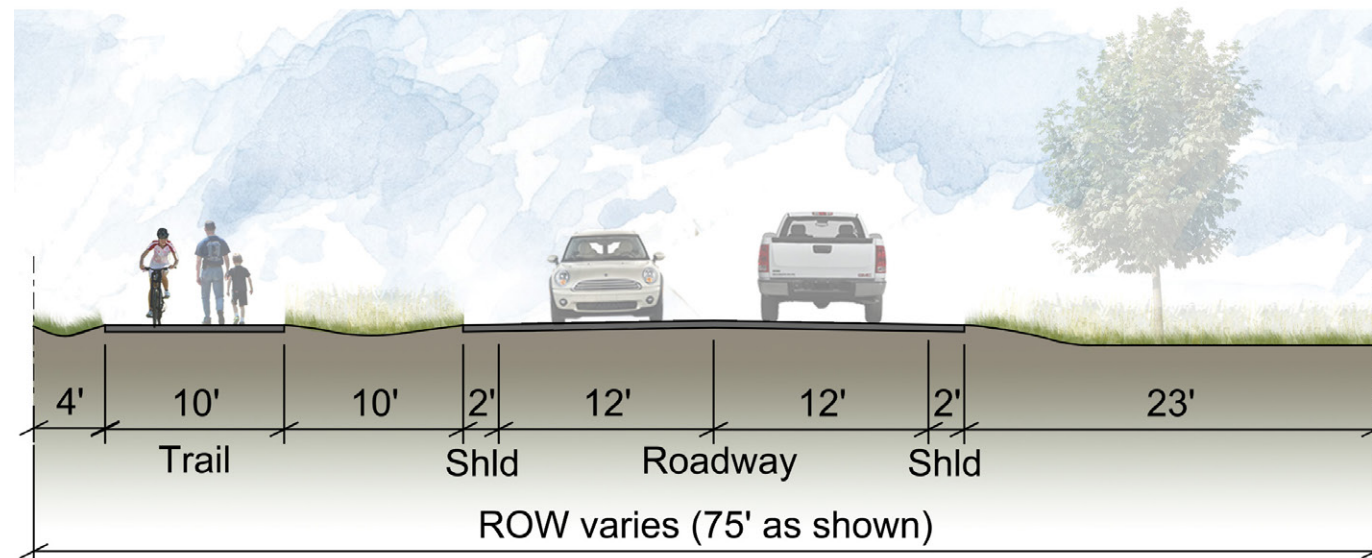
B1



B3



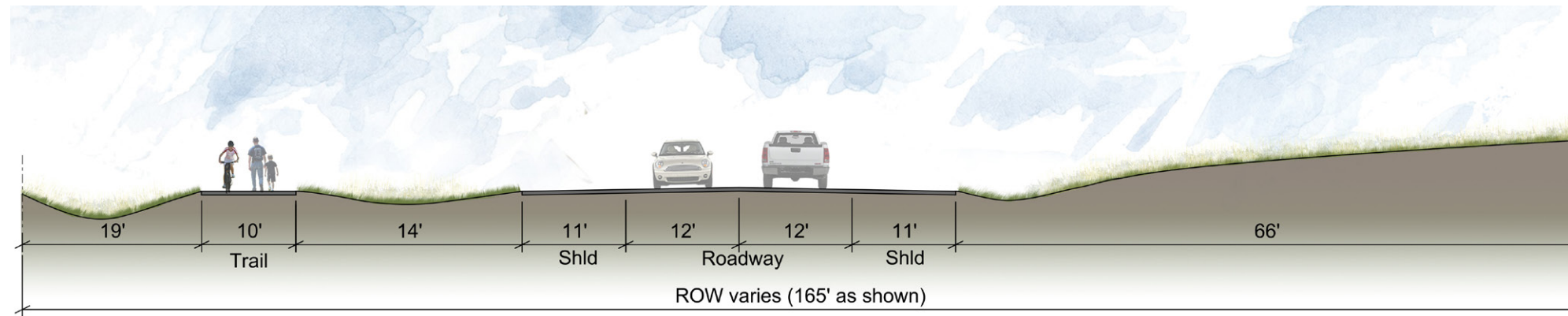
B3



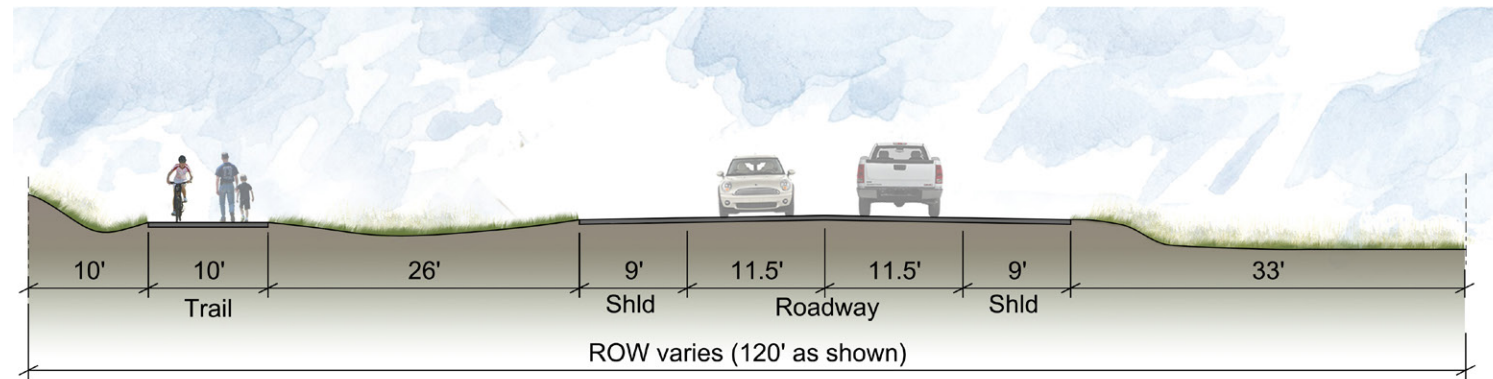




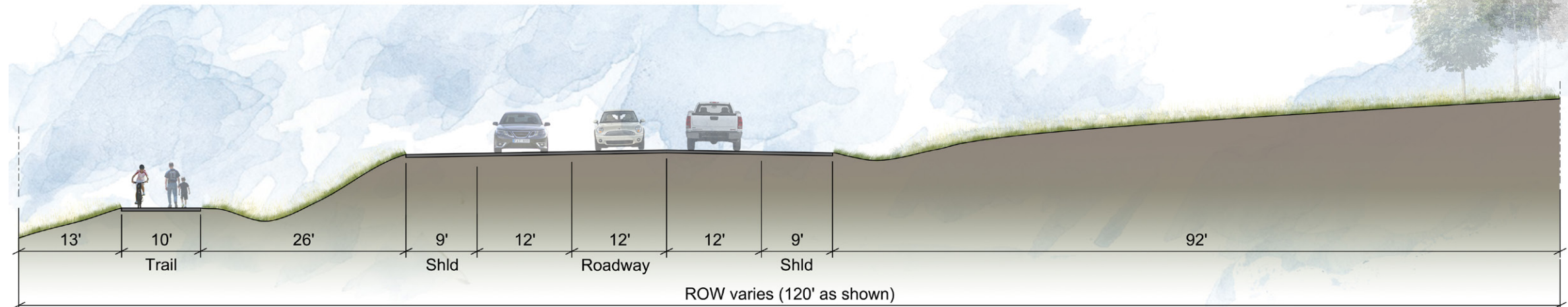
**C1**



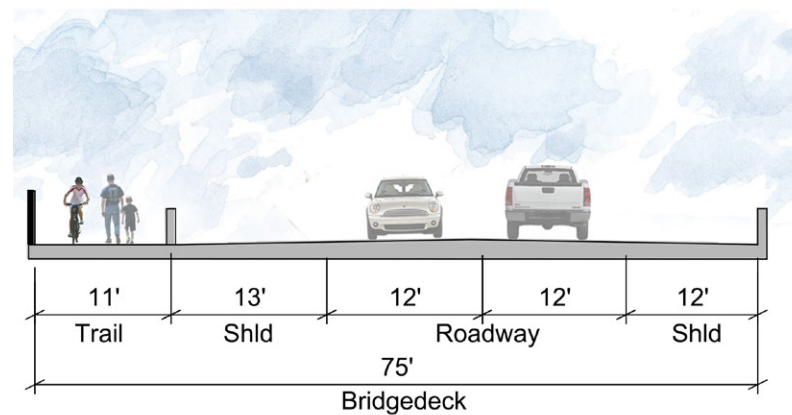
**C2**



**C3**



**BRIDGE**





# Trail Corridor Alternatives – Evaluation Summary

	Segment A West	Segment A East	Segment B	Segment C
Length (miles)	11.5	10.3	6.8	7.8
<b>Trail User</b>				
Ped/Bike Multi-use Trail per MnDNR guidelines	Yes	Yes	Yes	Yes
Snowmobile	No	No	Potential	Potential
Equestrian	No	No	No*	No*
<b>Right-of-Way Ownership</b>				
Publicly owned land requires no right-of-way acquisition	● - Private	● - Public & Private	● - Public & Private	● - Public
<b>Wetland Conflicts (acres)</b>				
Corridor alignment crosses between 1 and 5 acres	●	●	●	●
<b>Railroad Crossing</b>				
Corridor alignment does not cross railroad	●	●	●	●
<b>Road Crossing</b>				
Corridor alignment minimizes amount of crossings	●	●	●	●
<b>Scenic Value</b>				
Corridor has high scenic value	●	●	●	●
<b>Traffic Volume</b>				
Alignment minimizes exposure to traffic	●	●	●	●
<b>Comfort Value</b>				
Corridor has high comfort value (traffic volume, traffic speed & distance from travel lane)	●	●	●	●
<b>Key Destinations</b>	Sakatah Singing Hills State Trail, MN River, Kasota Prairie SNA & Downtown Kasota	Sakatah Singing Hills State Trail, MN River, Kasota Prairie SNA & Downtown Kasota	Sakatah Singing Hills State Trail, Downtown Kasota & Kasota Prairie Conservation Area	Sakatah State Trail & Riverside Park

 Good: meets criteria well
  Acceptable: but relatively less desirable than Good
  Less Desirable: considering criteria
 \*Horses may use a separate unpaved trail where available

