

Highway 22 Corridor Study

Key Corridor Access Management Guideline

Corridor: Highway 22

Corridor Limits: Segment 1 - US 169 to County Road 2

Functional Classification: US 169 to County Road 45 - Non-interregional urban/urbanizing principal arterial (MnDOT access category 4B)

County Road 45 to County Road 2 - Non-interregional rural principal arterial (MnDOT access category 4A)

Access ID	Access Location	Type of Access	Type of Access Controls	Existing Access			Primary Usage	Cross Street Function	Turn Lanes								Notes
				Full	Tee	Ri-Ro			NBL	NBR	SBL	SBR	WBL	WBR	EBL	EBR	
1	US 169	public	signal		x		auto	principal arterial	x	x (2)			x			x	
2	-	private	none		x		auto	commercial/recreational driveway		x	x						
3	-	private	none		x		auto/farm equipment	field approach									
4	County Road 45	public	side-street stop		x		auto	minor collector	x			x					
5	-	private	none		x		auto	residential driveway									
6	-	private	none		x		auto/heavy vehicles	commercial driveway									
7	County Road 21/ Hill Street	public	side-street stop	x			auto	major collector	x	x	x	x		x		x	
8	County Road 41/ Pearl Street E	public	side-street stop	x			auto	minor collector/local	x	x	x	x				x	
9	-	private	none		x		auto	residential driveway									Access points 9 & 10 - same owner
10	-	private	none		x		auto	residential driveway									Access points 9 & 10 - same owner
11	-	private	none		x		auto	commercial driveway									
12	-	private	none		x		auto	commercial driveway									Access points 12 & 13 - same owner
13	-	private	none		x		auto	commercial driveway									Access points 12 & 13 - same owner
14	County Road 102 (460th Street)	public	side-street stop	x			auto	local		x		x					bypass lanes for NBL/SBL turning vehicles
15	-	private	none		x		auto/heavy vehicles	commercial driveway									
16	-	private	none		x		auto/farm equipment	field approach									
17	-	private	none		x		auto/farm equipment	field approach									
18	-	private	none		x		auto/farm equipment	field approach									
19	-	private	none		x		auto/farm equipment	field approach									
20	470th Street	public	side-street stop	x			auto	local		x		x					
21	-	private	none	x			auto	residential driveway/field approach									
22	-	private	none		x		auto	residential driveway									
23	-	private	none		x		auto	residential driveway									
24	-	private	none	x			auto	residential driveway/field approach									
25	-	private	none		x		auto	residential driveway									
26	-	private	none	x			auto	residential driveway									
27	-	private	none		x		auto	field approach									
28	Midway Ct	public			x		auto	local									
29	-	private	none		x		auto	residential driveway									
30	-	private	none		x		auto	residential driveway									
31	County Road 101 (480th Street)	public	side-street stop	x			auto	minor collector		x		x					bypass lanes for NBL/SBL turning vehicles
32	-	private	none		x		auto	field approach									
33	-	private	none	x			auto	residential driveway									
34	-	private	none		x		auto	residential driveway									
35	County Road 2 (243rd Street)	public	side-street stop		x		auto	major collector		x							bypass lane for SBL turning vehicles

Highway 22 Corridor Study

Key Corridor Access Management Guideline

Corridor: Highway 22

Corridor Limits: Segment 2 - County Road 2 to County Road 90

Functional Classification: County Road 2 to County Road 26 - Non-interregional rural principal arterial (MnDOT access category 4A)

County Road 26 to US 14 - Non-interregional urban/urbanizing principal arterial (MnDOT access category 4B)

US 14 to 200th Street - Non-interregional urban/urbanizing minor arterial (MnDOT access category 5B)

200th Street to County Road 90 - Non-interregional rural minor arterial (MnDOT access category 5A)

Access ID	Access Location	Type of Access	Type of Access Controls	Existing Access			Primary Usage	Cross Street Function	Turn Lanes								Notes
				Full	Tee	Ri-Ro			NBL	NBR	SBL	SBR	WBL	WBR	EBL	EBR	
35	County Road 2 (243rd Street)	public	side-street stop		x		auto	major collector		x							bypass lane for SBL turning vehicles
36	Pheasant Drive	public	side-street stop		x		auto	local				x					bypass lane for NBL turning vehicles
37	-	private	none		x		auto	residential driveway									bypass lane for NBL turning vehicles, access points 37 & 38 - same owner
38	-	private	none		x		auto	residential driveway									access points 37 & 38 - same owner
39	Wood Drive	public	side-street stop	x			auto	local		x							
40	-	private	none		x		auto	residential driveway									
41	Jayhawk Road/ 240th Street	public	side-street stop	x			auto	local		x		x					
42	-	private	none		x		auto	field approach									
43	-	private	none		x		auto	residential driveway									
44	-	private	none		x		auto	residential driveway									
45	-	private	none		x		auto	residential driveway									
46	-	private	none		x		auto	residential driveway									
47	-	private	none		x		auto	residential driveway									
48	-	private	none		x		auto	residential driveway									
49	238th Street	public	side-street stop		x		auto	local		x							bypass lane for SBL turning vehicles
50	-	private	none		x		auto	residential driveway									
51	-	private	none		x		auto/farm equipment	field approach									
52	-	private	none		x		auto/farm equipment	field approach									
53	-	private	none		x		auto	commercial driveway									
54	County Road 57 (N Riverfront Dr)	public	side-street stop	x			auto	minor arterial	x		x	x				x	
55	583rd Avenue	public	side-street stop	x			auto/farm equipment	local/field approach		x	x						
56	-	private	none	x			auto/farm equipment	field approach									
57	-	private	none	x			auto	residential driveway	x		x						
58	-	public	side-street stop	x			auto	local	x	x	x						
59	County Road 26 (227th Street)	public	signal	x			auto	major collector	x	x	x	x	x	x	x	x	
60	N Augusta Ct	public	side-street stop			x	auto	local									
61	Augusta Dr	public	side-street stop	x			auto	local	x	x	x	x					
62	-	private	none			x	auto	commercial driveway									
63	County Road 3 (N Victory Dr)	public	signal	x			auto	minor arterial/major collector	2	x	x	x	x	x	x	x	west side = minor arterial, east side = major collector
64	Premier Dr	public	side-street stop			x	auto	local				x					
65	Premier Dr	public	side-street stop			x	auto	local		x							

Highway 22 Corridor Study

Key Corridor Access Management Guideline

Corridor: Highway 22

Corridor Limits: Segment 3 - County Road 162 to South Junction of Highway 30/County Road 29

Functional Classification: County Road 162 to County Road 7 - Non-interregional rural minor arterial (MnDOT access category 5A)

County Road 7 to North Junction of Highway 30/County Road 21 - Non-interregional urban/urbanizing minor arterial (MnDOT access category 5B)

North Junction of Highway 30/County Road 21 to South Junction of Highway 30/County Road 29 - Non-interregional rural minor arterial (MnDOT access category 5A)

Access ID	Access Location	Type of Access	Type of Access Controls	Existing Access Configuration			Primary Usage	Cross Street Function	Turn Lanes								Notes
				Full	Tee	Ri-Ro			NBL	NBR	SBL	SBR	WBL	WBR	EBL	EBR	
92	-	private	none		x		auto	residential driveway									
93	-	private	none		x		auto	commercial driveway									
94	192rd Ln	public	side-street stop		x		auto	local									
95	Terrace View E	public	side-street stop	x			auto	local				x					slight offset with golf course access
96	-	private	none		x		auto	commercial driveway				x					
97	-	private	none		x		auto/farm equipment	field approach				x					NB passing lane
98	-	private	none		x		auto	residential/commercial driveway				x					NB passing lane
99	Terrace View W	public	side-street stop	x			auto	local				x					NB passing lane
100	-	private	none		x		auto	residential driveway									NB passing lane
101	-	private	none		x		auto	residential driveway									NB passing lane
102	-	private	none		x		auto	residential driveway									NB passing lane
103	191st Ln	public	none	x			auto	local									NB passing lane
104	190th Ln	public	side-street stop		x		auto	local									NB passing lane
105	-	private	none	x			auto	residential driveway									
106	-	private	none		x		auto	residential driveway									
107	Christa View Dr	public	none	x			auto	local									
108	-	public	none		x		auto	public driveway									SB passing lane
109	-	private	none		x		auto	residential driveway									SB passing lane
110	-	private	none		x		auto	residential driveway									SB passing lane
111	-	private	none		x		auto	residential driveway									SB passing lane
112	-	private	none		x		auto	residential driveway									SB passing lane
113	County Road 15 (185th Street)	public	side-street stop	x			auto	minor collector		x							SB passing lane
114	-	private	none		x		auto	residential driveway									
115	-	private	none		x		auto	residential driveway									
116	-	private	none		x		auto	field approach									
117	-	private	none		x		auto	residential driveway									access points 118 & 119 - same owner
118	-	private	none		x		auto	residential driveway									access points 118 & 119 - same owner
119	County Road 8 (179th Street)	public	side-street stop	x			auto	minor collector		x		x					
120	-	private	none		x		auto	public driveway									cemetary entrance
121	-	private	none		x		auto	public driveway									cemetary entrance
122	-	private	none		x		auto	public driveway									cemetary entrance
123	-	private	none	x			auto/farm equipment	field approach									
124	-	private	none		x		auto/farm equipment	field approach									
125	-	private	none		x		auto	residential driveway				x					
126	-	private	none		x		auto	residential driveway				x					NB passing lane for left turn lane
127	-	private	none	x			auto/farm equipment	residential driveway		x							

Key Corridor Access Management Guideline

Corridor Limits: Segment 3 - County Road 162 to South Junction of Highway 30/County Road 29

County Road 7 to North Junction of Highway 30/County Road 21 - Non-interregional urban/urbanizing minor arterial (MnDOT access category 5B)

[illegible]

Highway 22 Corridor Study

Key Corridor Access Management Guideline

Corridor: Highway 22

Corridor Limits: Segment 3 - County Road 162 to South Junction of Highway 30/County Road 29

Functional Classification: County Road 162 to County Road 7 - Non-interregional rural minor arterial (MnDOT access category 5A)

County Road 7 to North Junction of Highway 30/County Road 21 - Non-interregional urban/urbanizing minor arterial (MnDOT access category 5B)

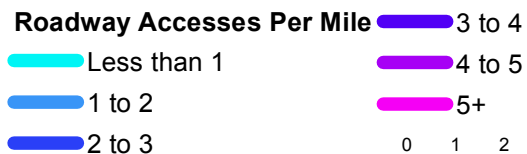
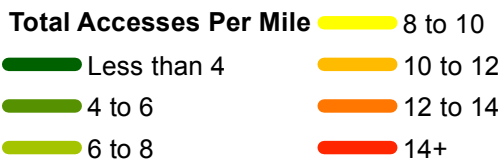
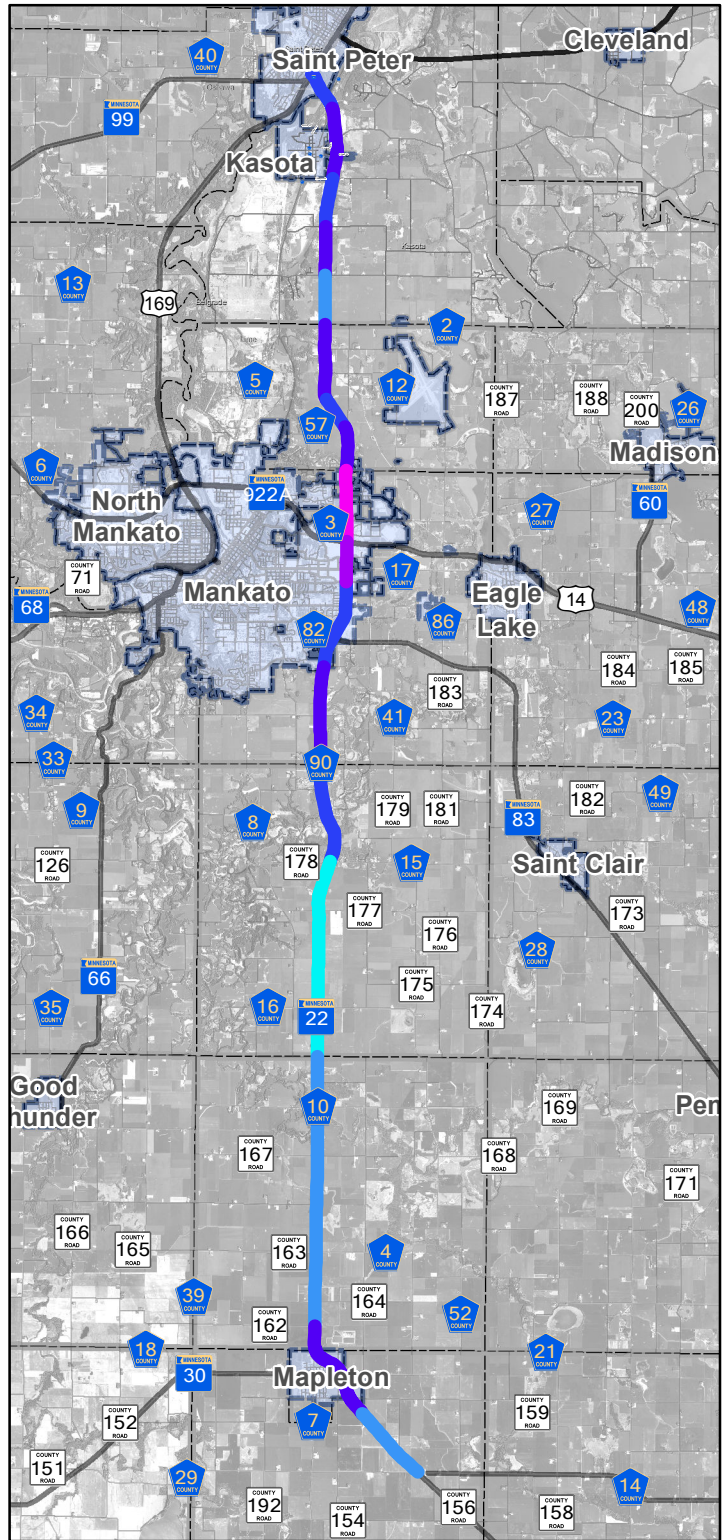
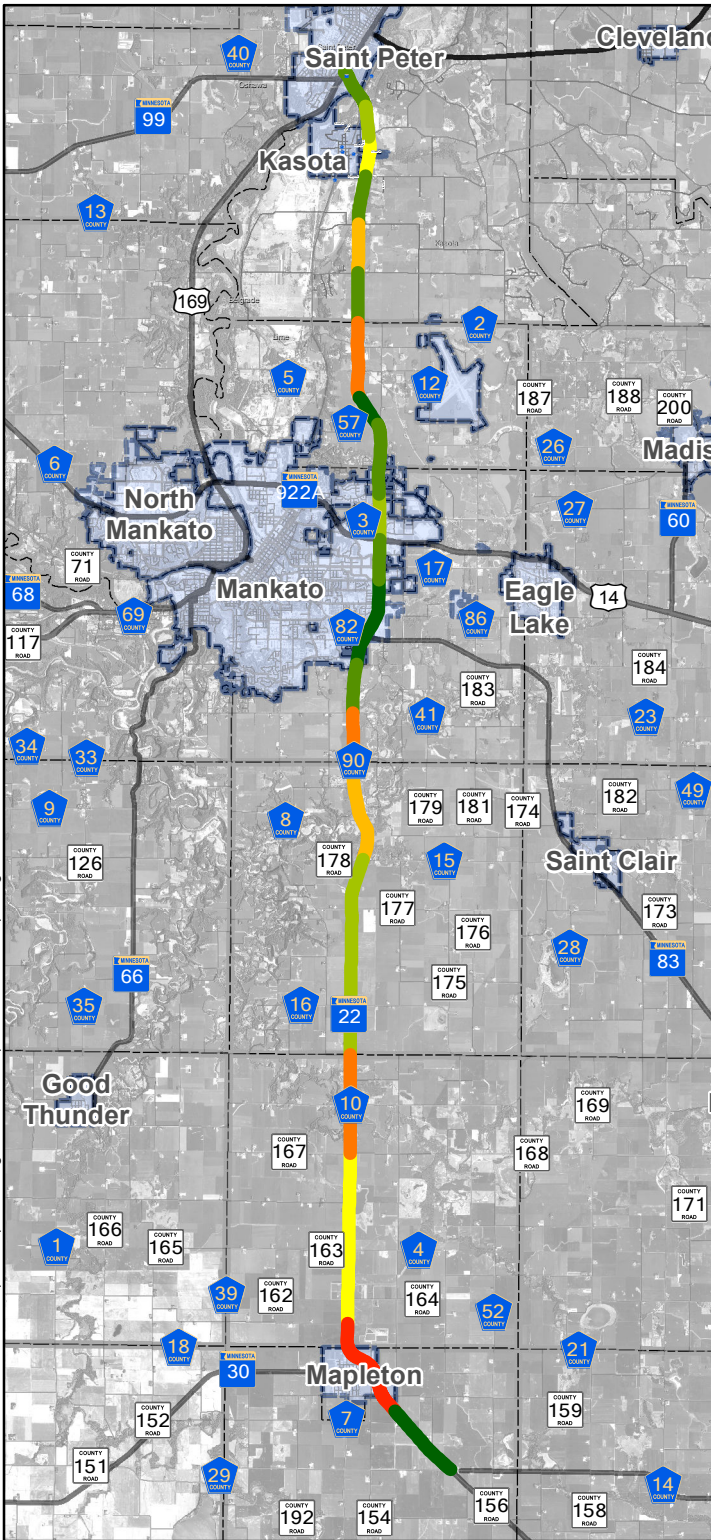
North Junction of Highway 30/County Road 21 to South Junction of Highway 30/County Road 29 - Non-interregional rural minor arterial (MnDOT access category 5A)

Access ID	Access Location	Type of Access	Type of Access Controls	Existing Access Configuration			Primary Usage	Cross Street Function	Turn Lanes								Notes
				Full	Tee	Ri-Ro			NBL	NBR	SBL	SBR	WBL	WBR	EBL	EBR	
234	-	private	none		x		auto	residential driveway									
235	-	private	none		x		auto/farm equipment	field approach									
236	-	private	none		x		auto	residential driveway									
237	590th Ave	public	side-street stop		x		auto	local									
238	TH 30 S Jct	pubic	side-street stop	x			auto	minor arterial/minor collector		x		x					west side = minor collector, east side = minor arterial



HIGHWAY 22 | CORRIDOR STUDY

P:\MPO\Mankato\184171\GIS\Report Maps\Existing Conditions Report\12 - Access Spacing.mxd

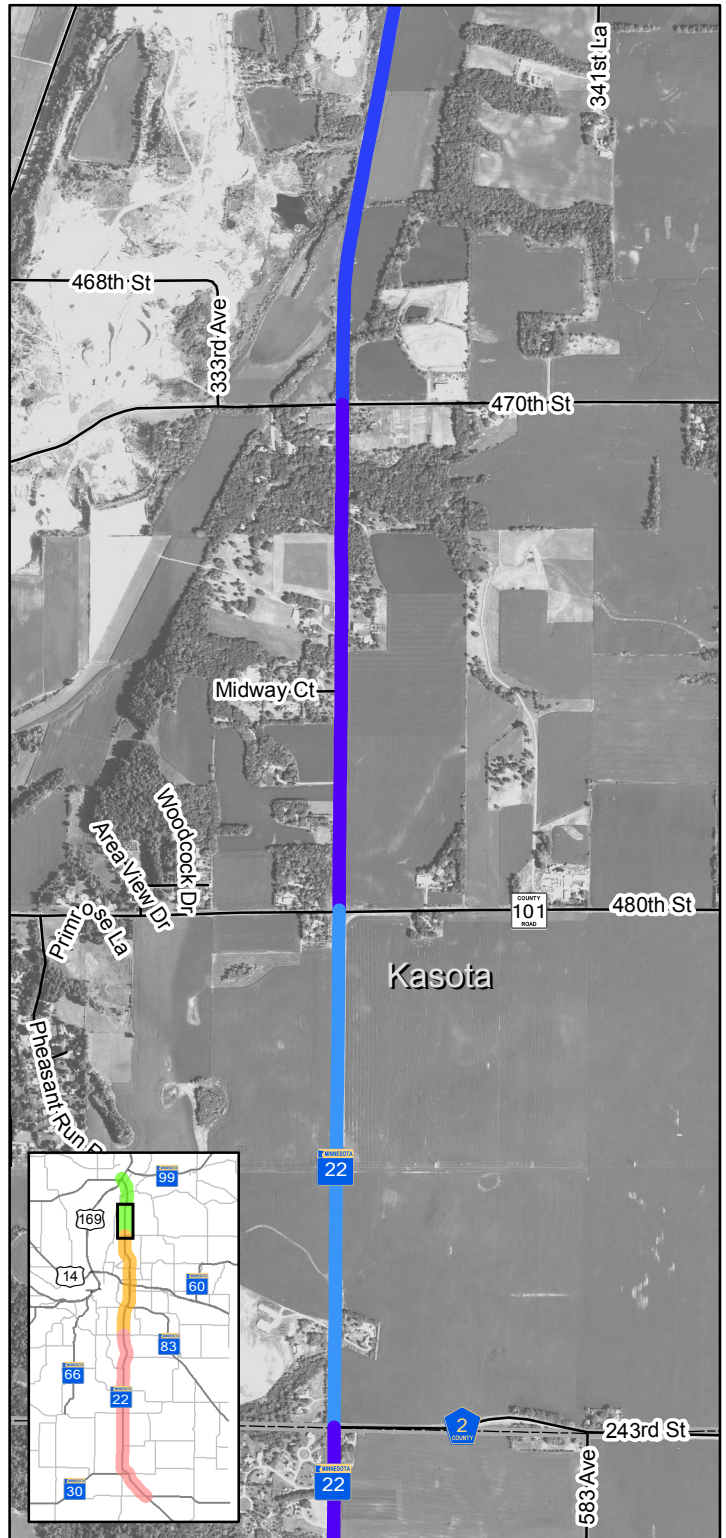
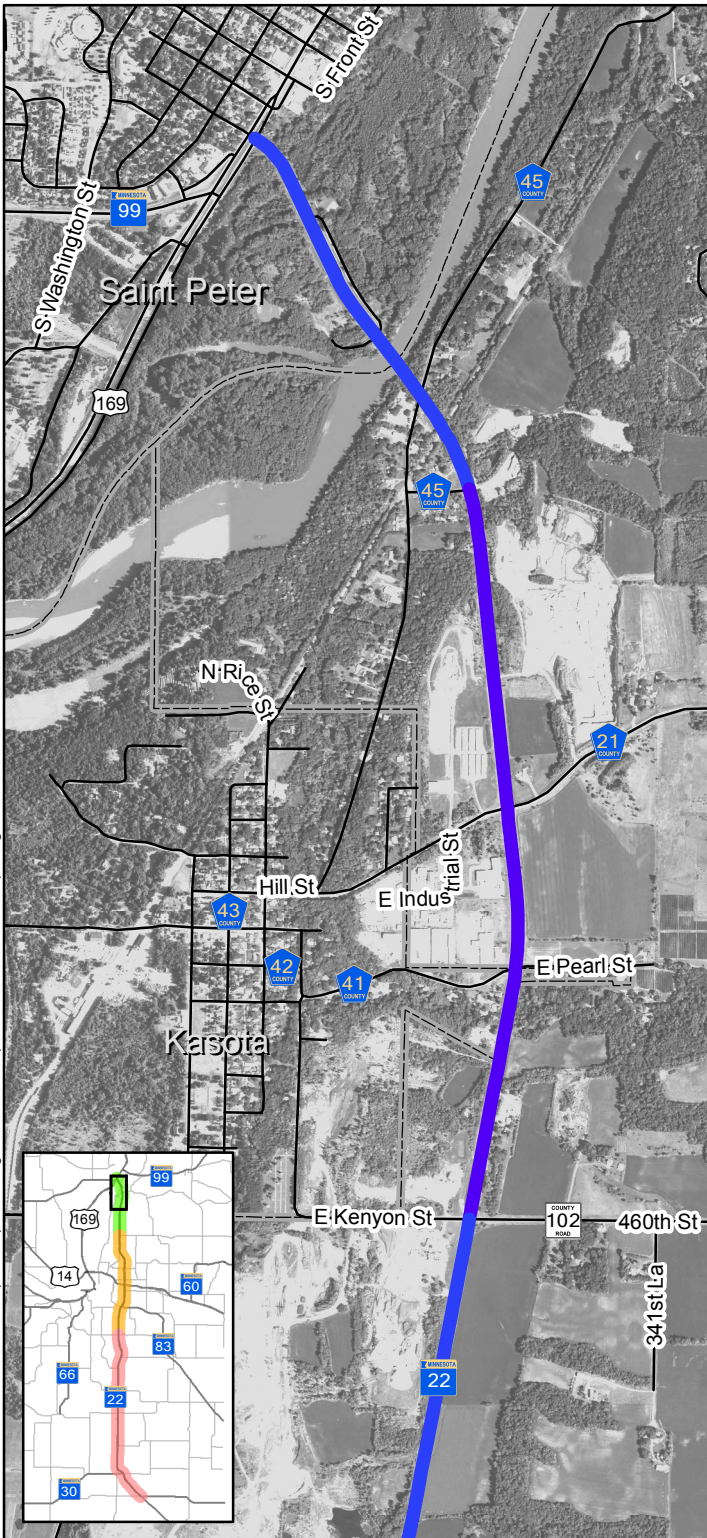


0 1 2 3 4 5
Miles



HIGHWAY 22 | CORRIDOR STUDY

P:\MPO\Mankato\18417107\GIS\Report Maps\Existing Conditions Report\12a - S1 - Access Spacing - Public.mxd



- Segment 1
- Segment 2
- Segment 3

Municipal Boundaries

Roadway Accesses Per Mile*

- Less than 1
- 1 to 2
- 2 to 3

- 3 to 4
- 4 to 5
- 5+

*Includes only public roadway access points

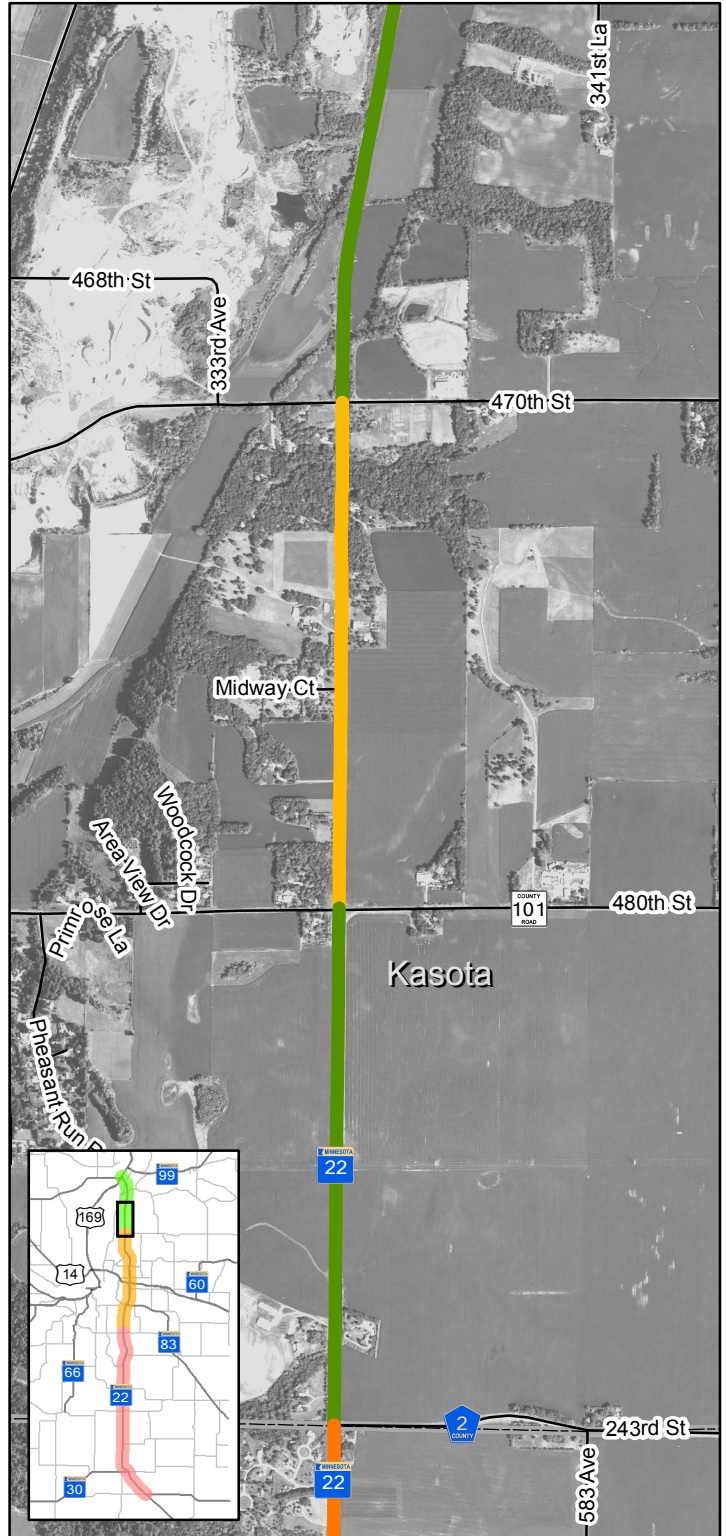
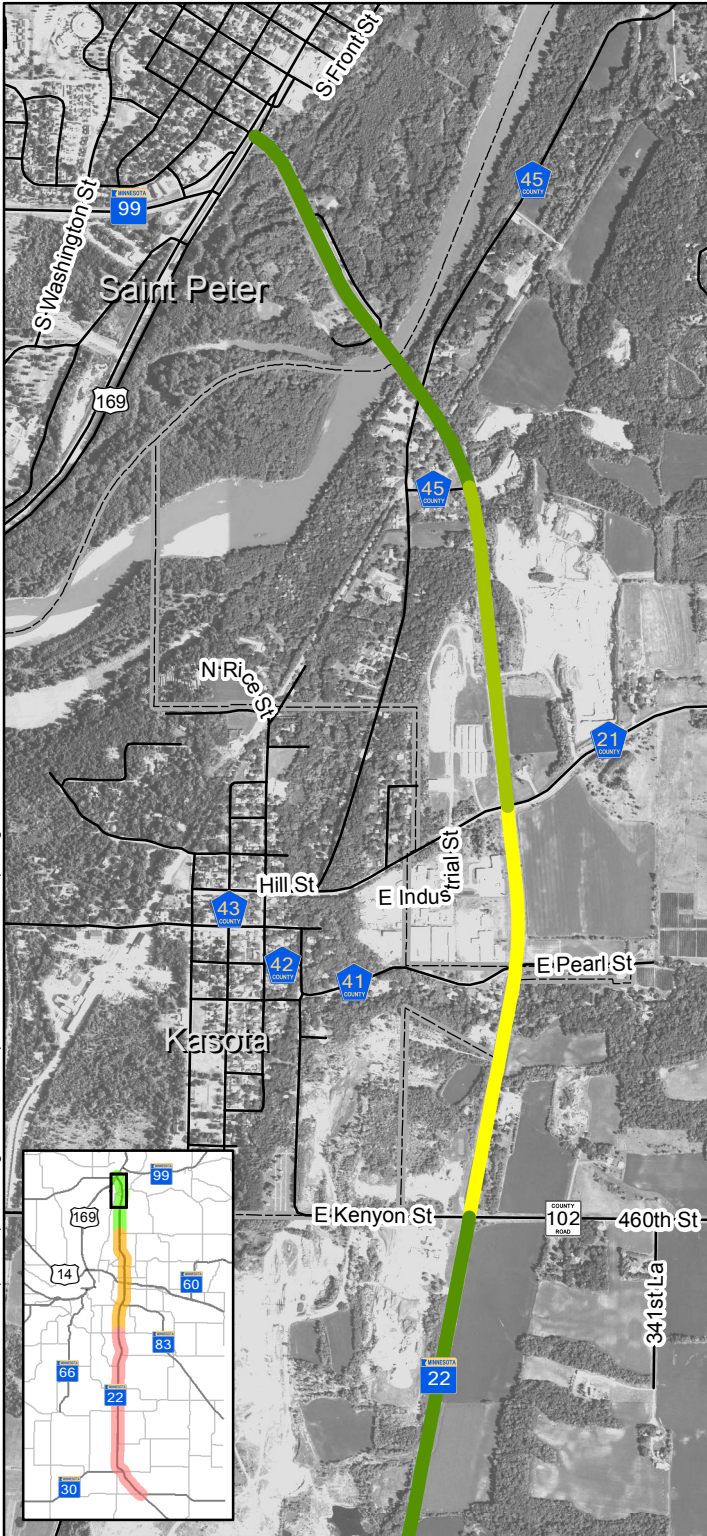


0 1,000 2,000 Feet



HIGHWAY 22 | CORRIDOR STUDY

P:\MPO\Mankato\18417107\GIS\Report Maps\Existing Conditions Report\12a - S1 - Access Spacing.mxd



- Segment 1
- Segment 2
- Segment 3

Municipal Boundaries

Total Accesses Per Mile*

- Less than 4
- 4 to 6
- 6 to 8

- 8 to 10
- 10 to 12
- 12 to 14
- 14+

*Includes private access points like residential/commercial driveways and field accesses

0 1,000 2,000 Feet

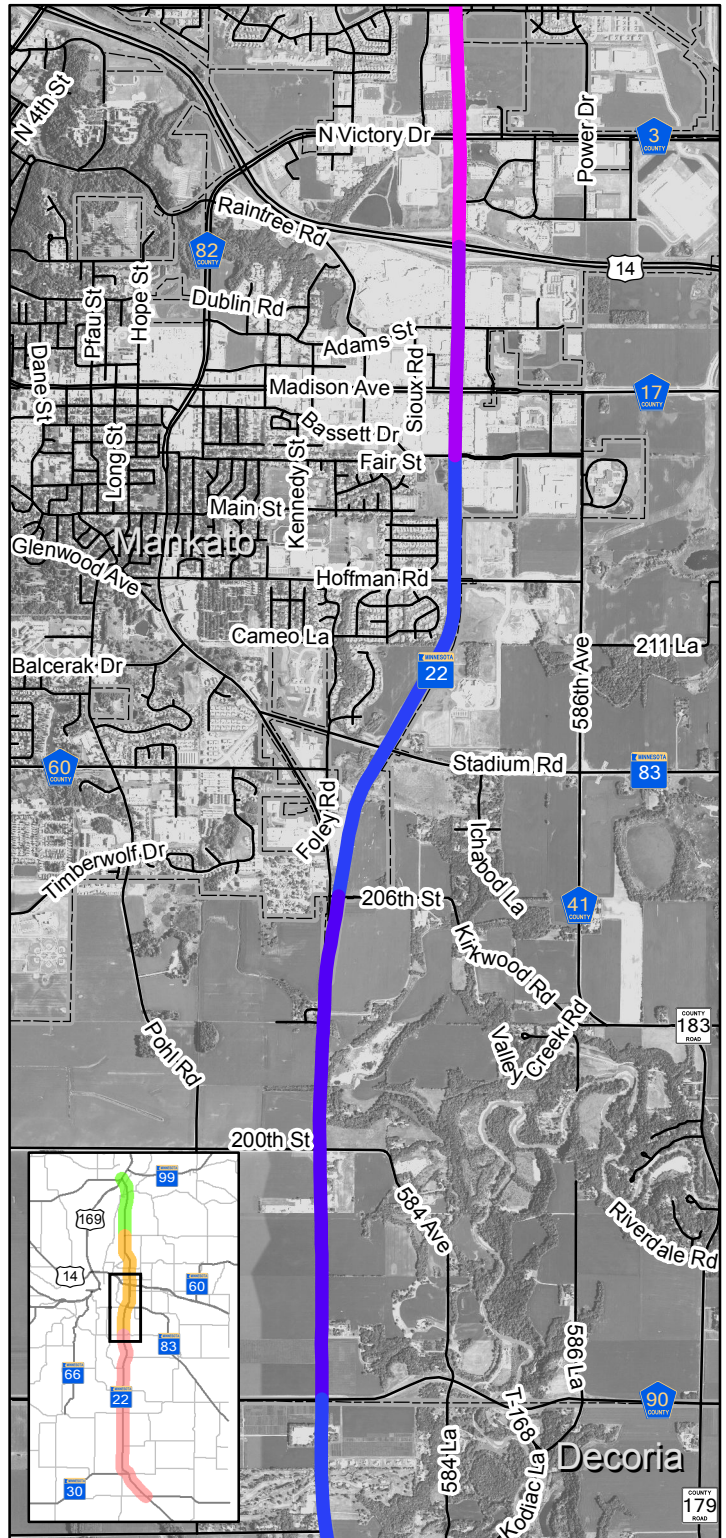
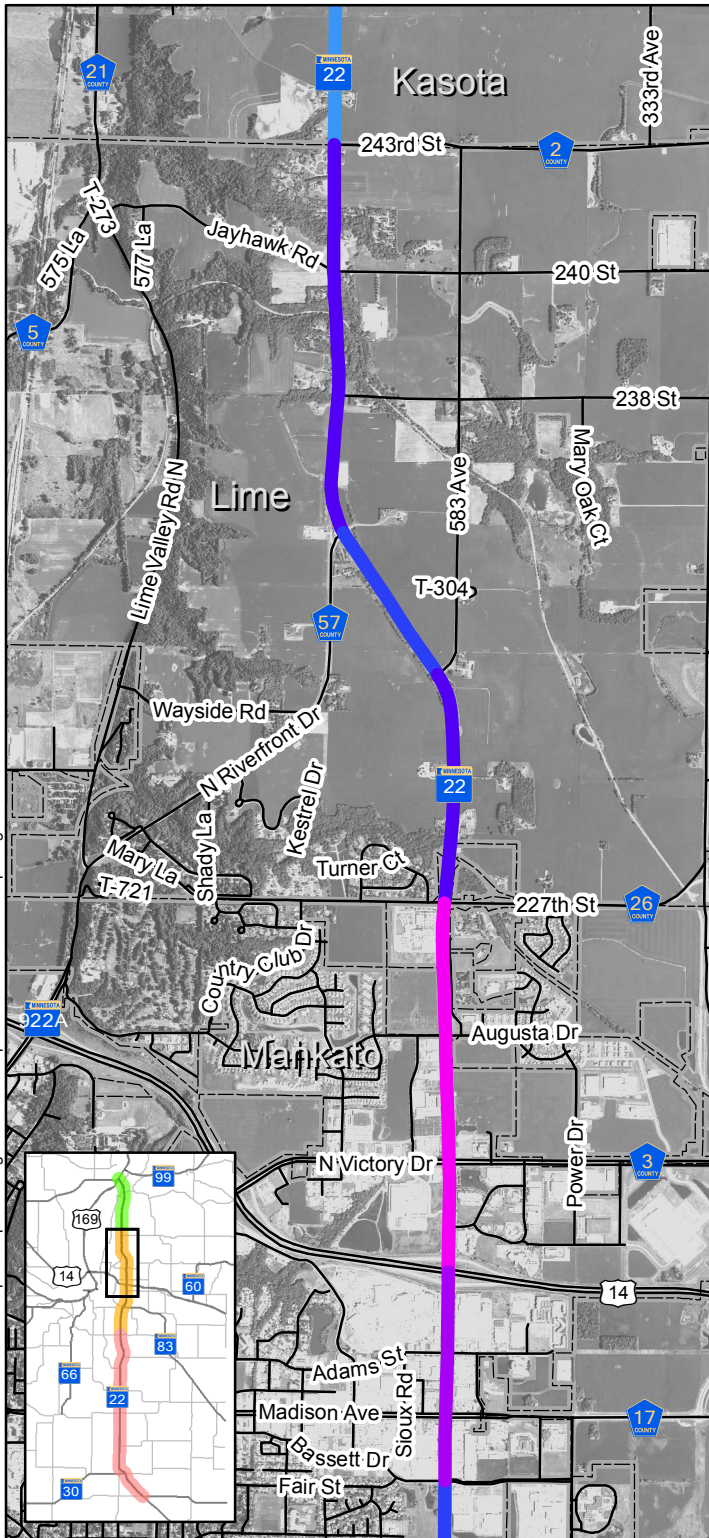


Overall Access Spacing



HIGHWAY 22 | CORRIDOR STUDY

P:\MPO\Mankato\18417107\GIS\Report Maps\Existing Conditions Report\12b - S2 - Access Spacing - Public.mxd



- Segment 1
- Segment 2
- Segment 3

Roadway Accesses Per Mile*

- Less than 1
- 1 to 2
- 2 to 3
- 3 to 4
- 4 to 5
- 5+

*Includes only public roadway access points

Municipal Boundaries

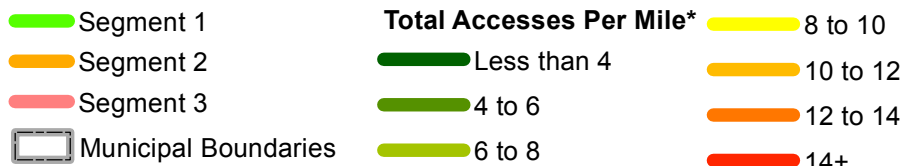
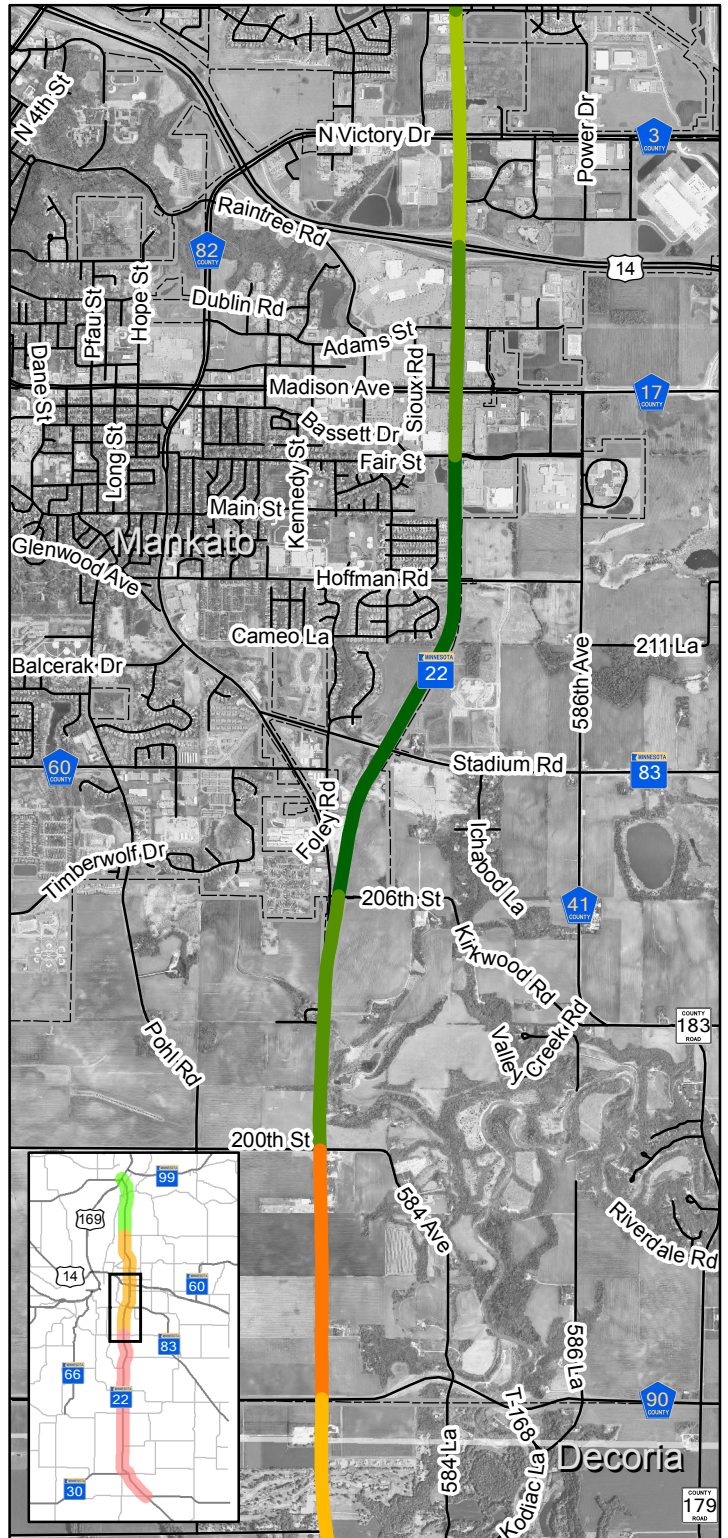
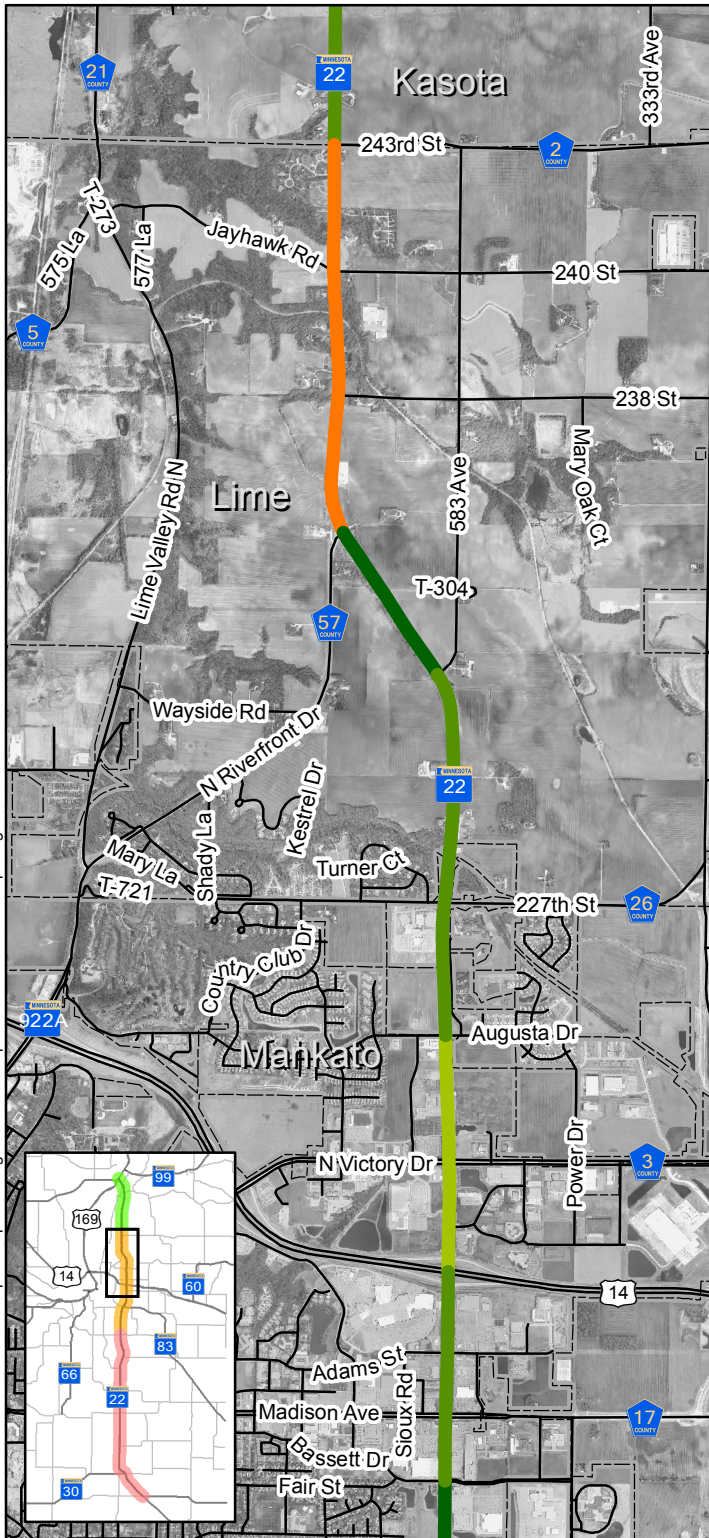


0 2,000 4,000 Feet

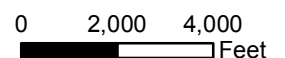


HIGHWAY 22 | CORRIDOR STUDY

P:\MPO\Mankato\184171\GIS\Report Maps\Existing Conditions Report\12b - S2 - Access Spacing.mxd



*Includes private access points like residential/commercial driveways and field accesses

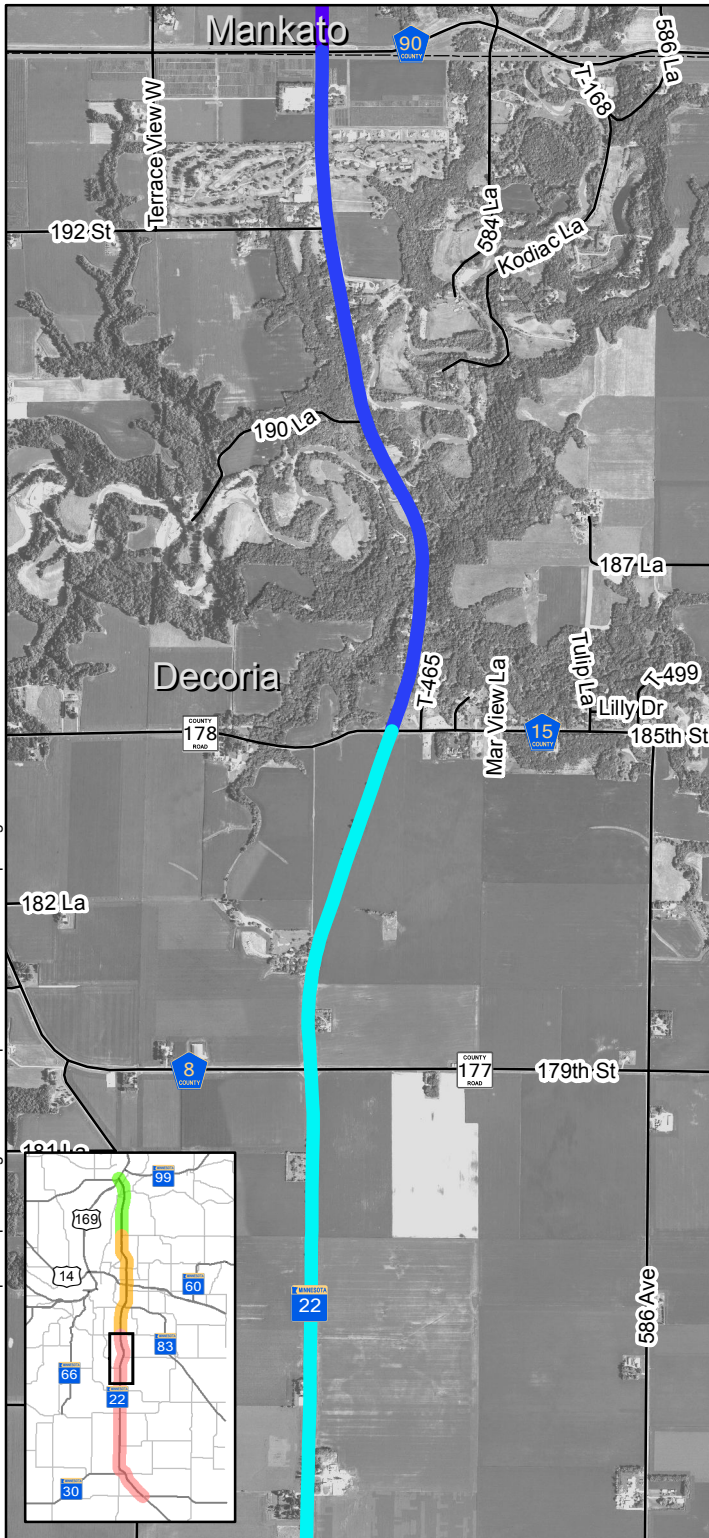


Overall Access Spacing



HIGHWAY 22 | CORRIDOR STUDY

P:\MPO\Mankato\18417107\GIS\Report Maps\Existing Conditions Report\12c - S3a - Access Spacing - Public.mxd



- Segment 1
- Segment 2
- Segment 3
- Municipal Boundaries

Roadway Accesses Per Mile*

- Less than 1
- 1 to 2
- 2 to 3
- 3 to 4
- 4 to 5
- 5+

*Includes only public roadway access points

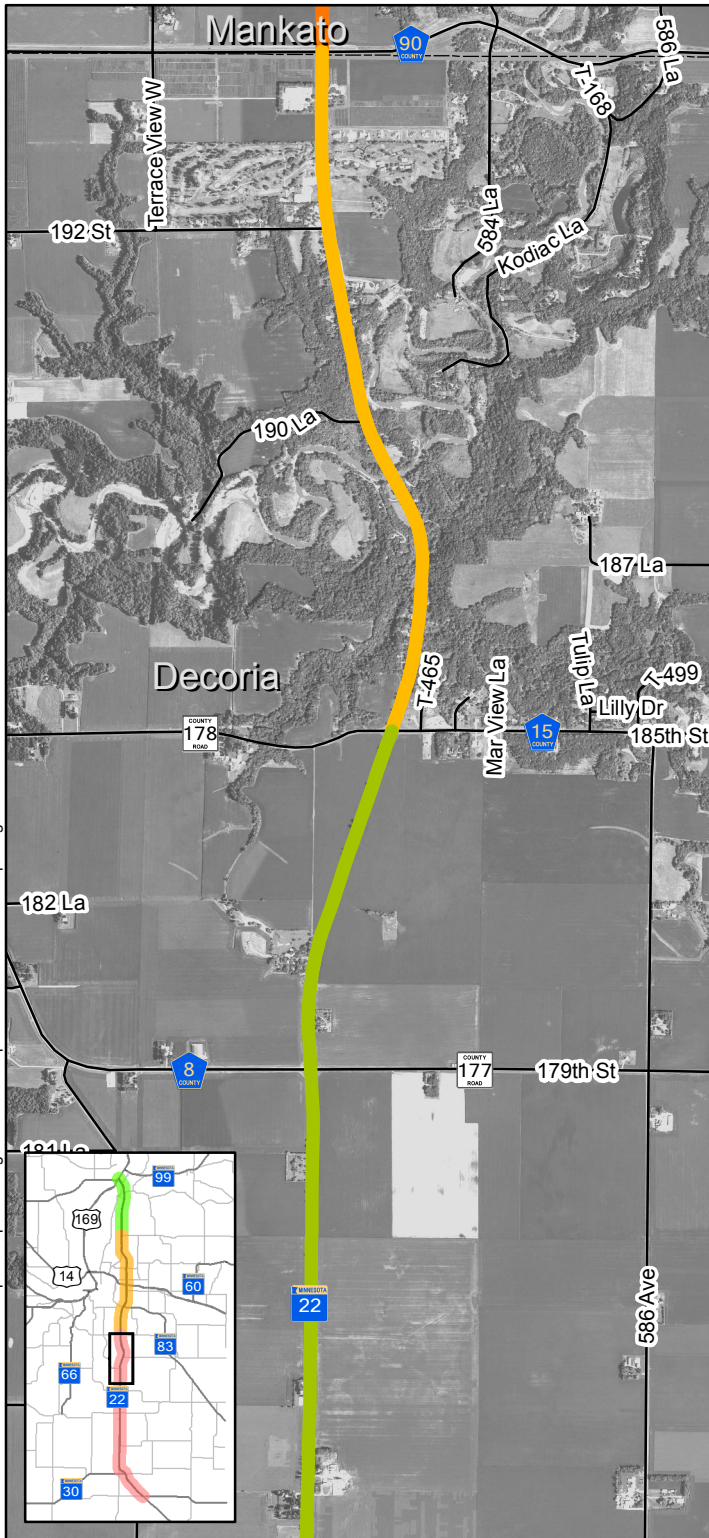


0 1,500 3,000 Feet



HIGHWAY 22 | CORRIDOR STUDY

P:\MPO\Mankato\18417107\GIS\Report Maps\Existing Conditions Report\12c - S3a - Access Spacing.mxd



- Segment 1
- Segment 2
- Segment 3
- Municipal Boundaries

Total Accesses Per Mile*

- Less than 4
- 4 to 6
- 6 to 8

- 8 to 10
- 10 to 12
- 12 to 14
- 14+

*Includes private access points like residential/commercial driveways and field accesses

0 1,500 3,000 Feet

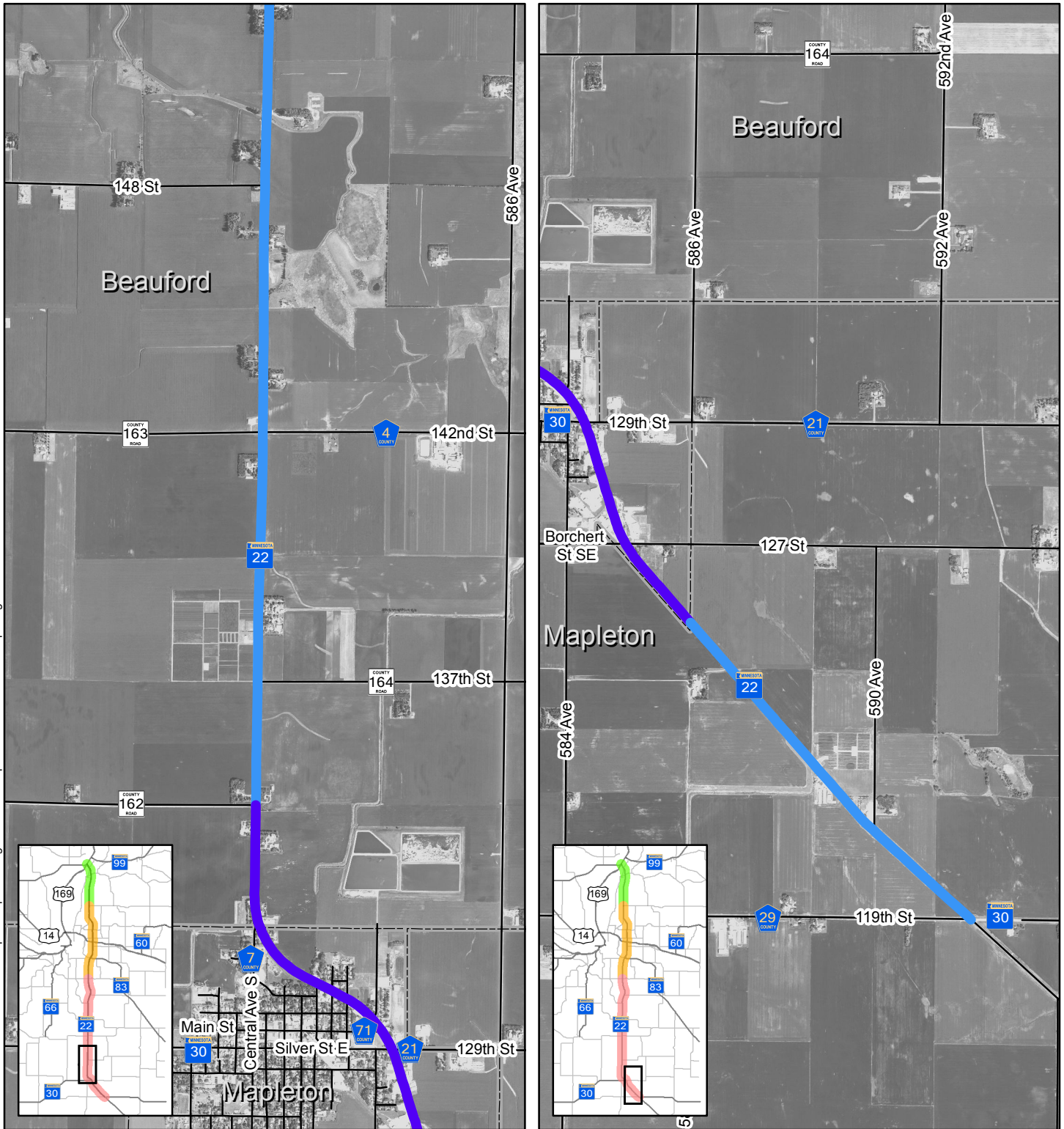


Overall Access Spacing



HIGHWAY 22 | CORRIDOR STUDY

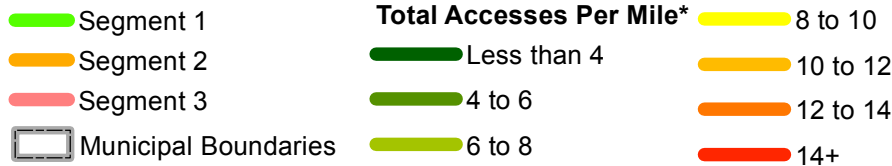
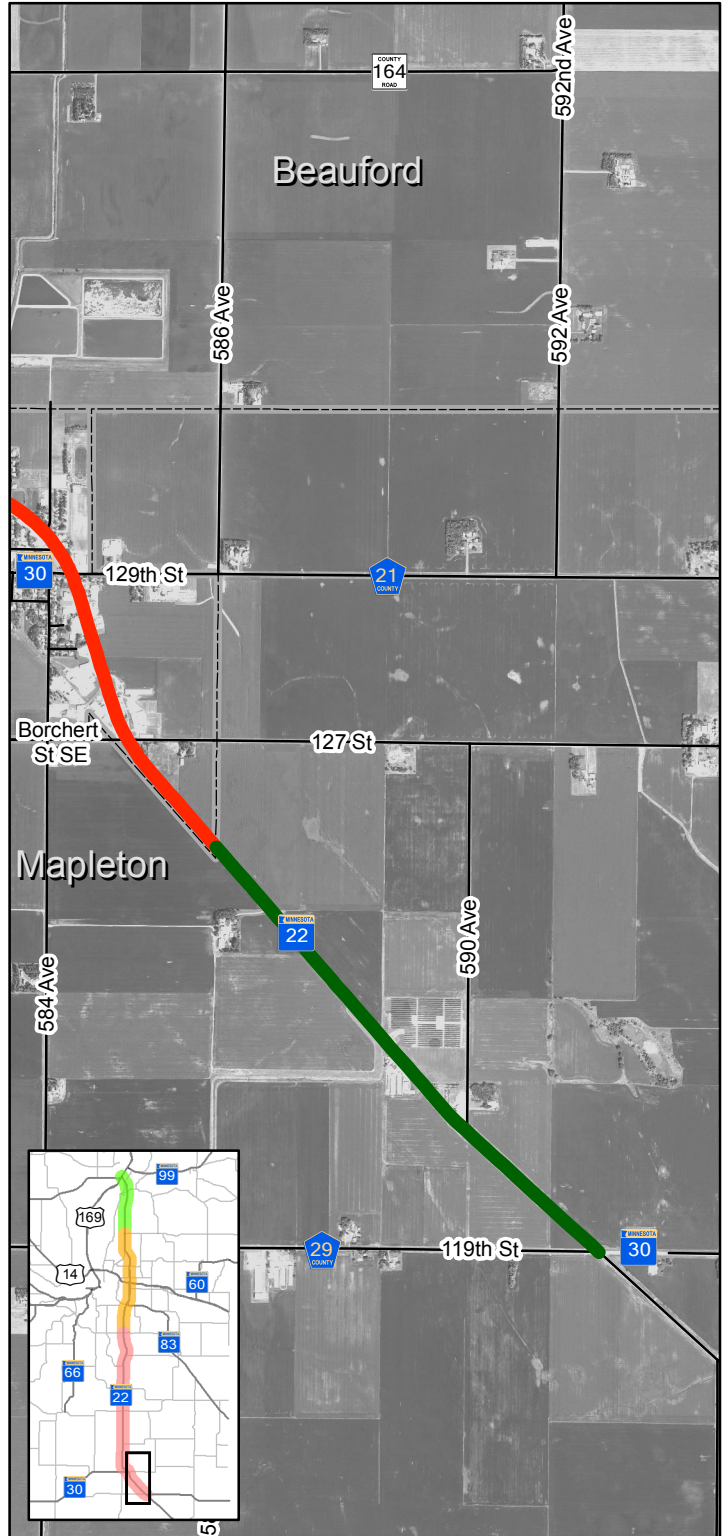
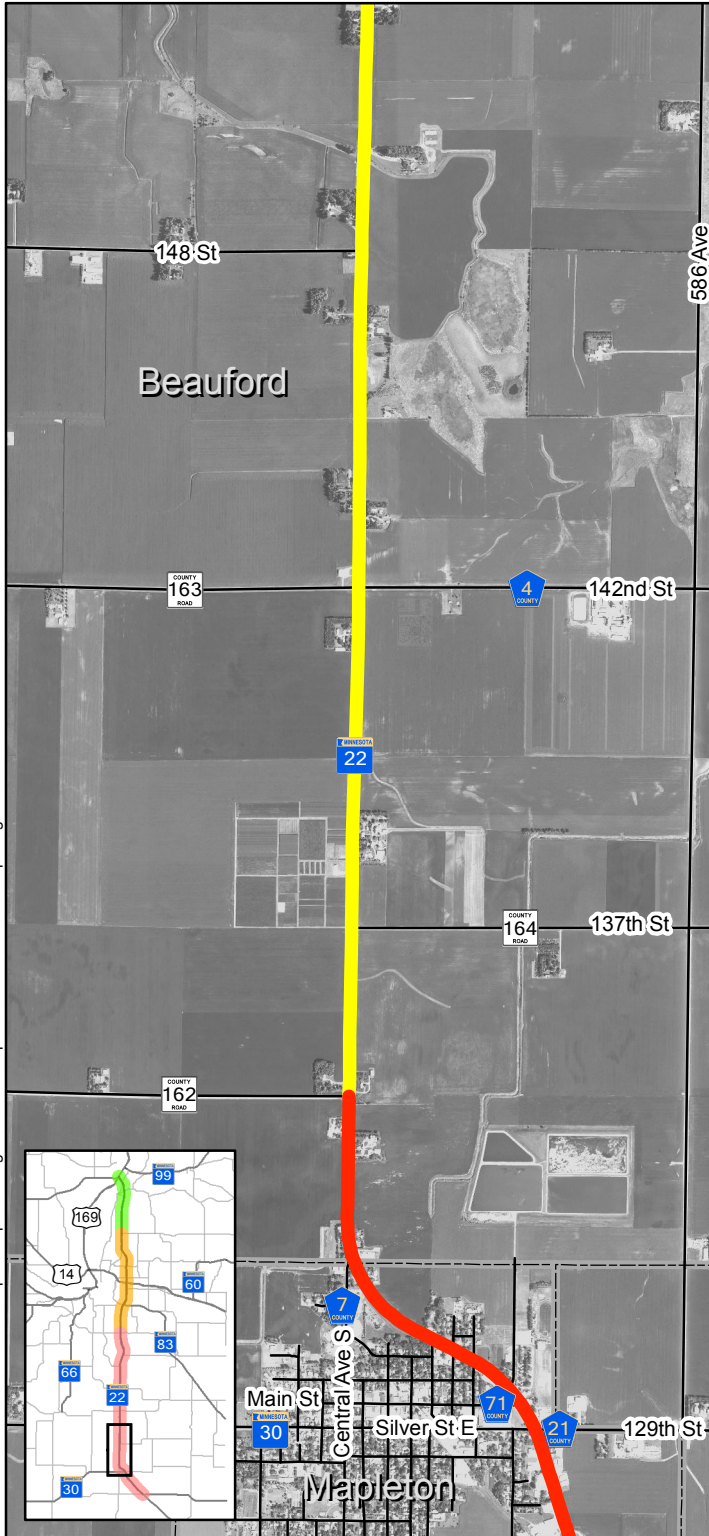
P:\MPO\Mankato\18417107\GIS\Report Maps\Existing Conditions Report\12d - S3b - Access Spacing - Public.mxd





HIGHWAY 22 | CORRIDOR STUDY

P:\MPO\Mankato\18417107\GIS\Report Maps\Existing Conditions Report\12d - S3b - Access Spacing.mxd



*Includes private access points like residential/commercial driveways and field accesses

0 1,500 3,000 Feet



Overall Access Spacing